



Combined
data sheet
ACM



AUDIO CONTROL MODULE FOR THIRD PARTY MULTI-ROOM AUDIO SYSTEMS

WHAT IS IT ?

A plug-in adaptor for a Rako Bridge (WA, WTC, RTC, RA or WRA-232) to enable control of third party audio devices from Rako transmitters such as RCM and WCM wall-panels.

ACM audio module allowing control of ethernet based, third party, multi-room audio systems.

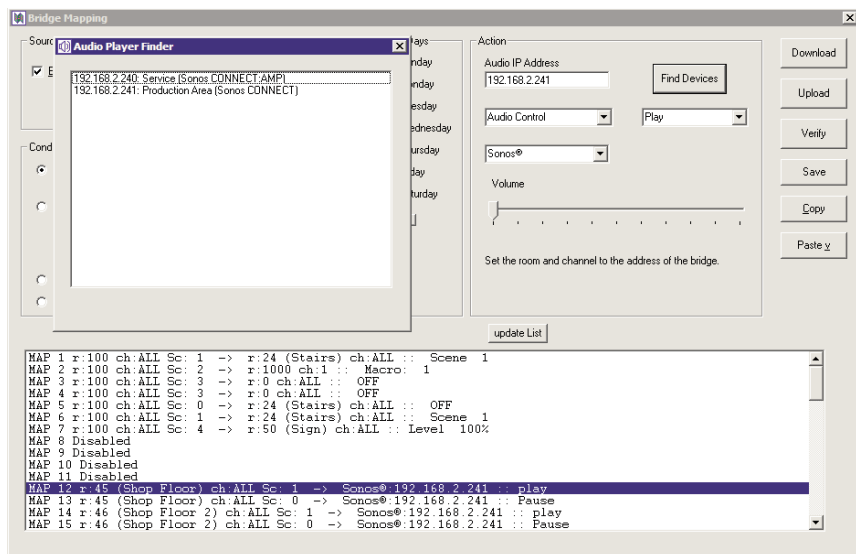
AUDIO CONTROL

The ACM (Audio Control Module) is a compact adaptor board which connects inside a Rako Bridge and enables 'Maps' from a Rako wallpanel to be re-transmitted as commands for ethernet based audio systems such as Sonos™ and Linn™ (contact Rako for more details). Configurable using Rasoft programming software the ACM allows Rasoft to find devices and allows maps to be created from standard Rako transmissions to 'Audio Messages'.

Available Audio commands are:

Set Mute	Clear Mute	Toggle Mute	Play
Pause	Set Volume	Volume Step Up	Volume Step Down
Next Track	Previous Track	Toggle Play/Pause	

For clearer indication on a Rako wall-panel the RCM071 panel option is available with standard Audio symbols (see example above). Alternatively RCM and WCM panels can be custom etched to customer requirements.



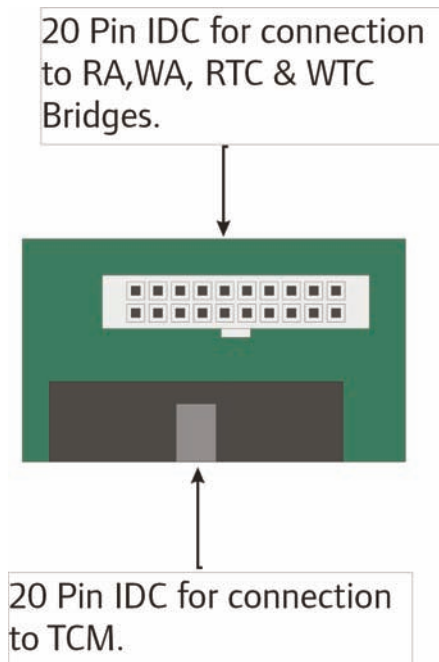


Combined
data sheet
ACM

AUDIO CONTROL MODULE FOR THIRD PARTY MULTI-ROOM AUDIO SYSTEMS



connection details



telephone +44 (0) 1634 226666 fax +44 (0) 1634 226667 www.rakocontrols.com