

WCM-D Instruction Manual

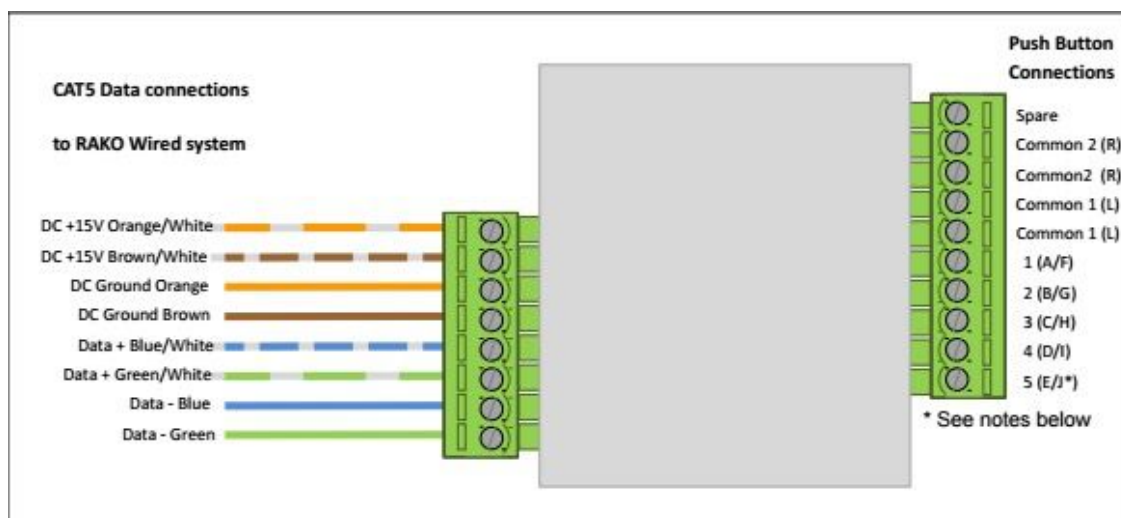


For programming information: [“Wired programming guide”](#)

For further installation information: [“Wired Application Sheet”](#)

The WCM-D allows Custom & Third Party Switch Plates to be used in place of a standard Rako wired wall panels (WCM). The WCM-D will fit inside a single gang back box. Up to nine switch inputs can be taken per WCM-D. The switch plate can be formed of Latching or Momentary Action switches which have short wires to terminals on the WCM-D.

[Wiring Switches to the WCM](#)



The WCM-D is wired into 2 pluggable sets of terminals. The 8 way terminal block connects to the Rako wired network formed of cat5/cat6 cable with cable allocations as set out above.

The 10 way terminal block is used to wire up to nine 3rd party switch panels into the WCM-D. Inputs “A-E” are used by pairing with either of the “Common 1” terminals and “F-J” with the “Common 2” terminals.

NB

Input J cannot be wired to a switch it is used for set-up purposes only.

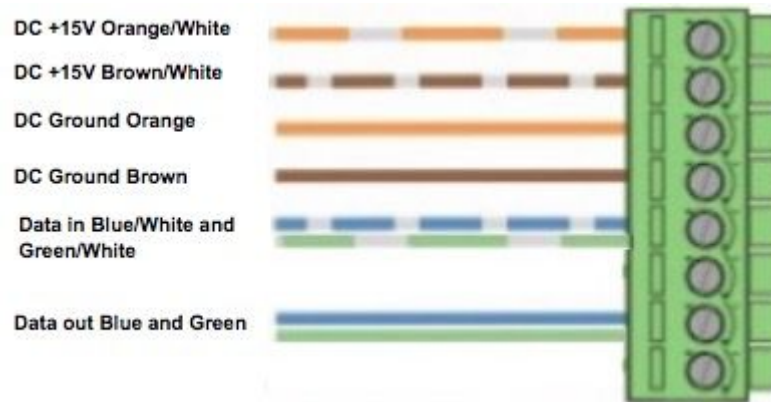
[Terminating the WCM-D](#)

End of line termination

When the WCM-D is at the “end of line” position a resistor termination is required. This is provided with the WCM-D. The resistor is placed between the Blue and the Blue/White.

Star termination

When used in conjunction with a RAK-Star a star termination is required. It should be wired as follows:



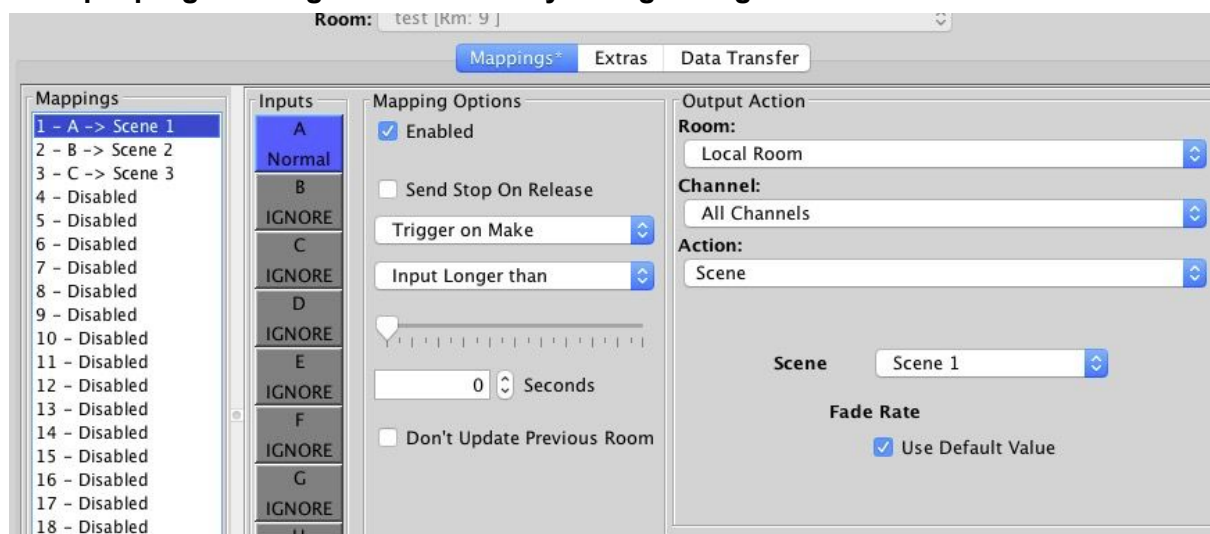
See RAK-STAR user manual for when to use star termination.

Setting up the WCM-D

- First open Rasoft Pro and ensure an WK-HUB or WA/WTC-Bridge is successfully connected (see wired programming guide for details).
- Short either of the two “Common 2” inputs with E/J to give a continuous J input for 3 or 4 seconds (when the WCM-D successfully enters set-up mode the LED will begin to blink).
- If the installation is correct a pop up box will appear in Rasoft Pro. If no pop up box appears there is most likely an error in the wiring of the Rako Wired Network.
- Enter a suitable name and assign the local room.

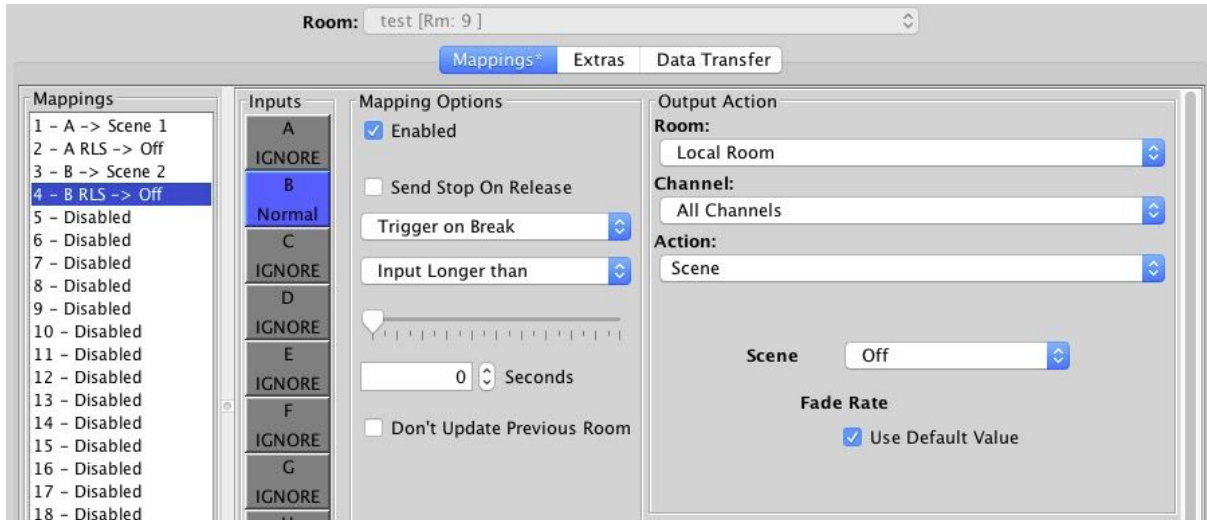
Programming the WCM-D inputs

Example programming for a momentary wiring configuration:



Above is an example of how a three way momentary switch would be programmed when wired in to inputs A,B and C of a WCM-D.

Example programming for a latching wiring configuration:



Above is an example of how a two way latching switch would be programmed when wired in to inputs A and B of a WCM-D.

Rako thanks you for having purchased a Rako product and hopes that you are pleased with your system. Should for any reason you need to contact us please contact us via our website www.rakocontrols.com or by phoning our customer help line on 01634 226666.

