



# Datasheet

## WANEX

Wired System Network Extender

### What is the WANEX?

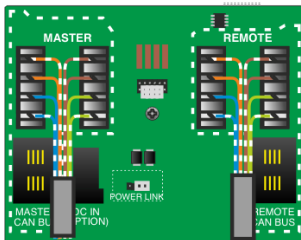
The WANEX is a Wired network extender consisting of two isolated connection points.

There are two main uses for the WANEX:

Systems that exceed the maximum cable length of 3000m for radial Wired networks or 1500m for star Wired networks. The WANEX is used to partition the system, creating two smaller Wired networks as if it were a single system.

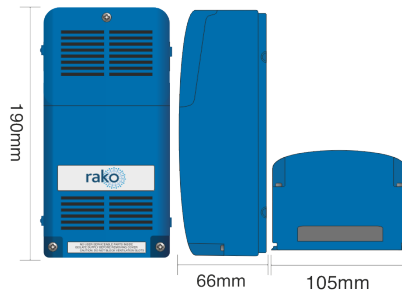
When there are three or more cables at a single connection point and the use of a RAK-STAR is not possible. This is typical when retrofitting a 4-core system, for further information, see Appendix 1 of the [WANEX Manual](#).

### Connections/Dimensions



ORANGE/WHITE: +15V  
ORANGE: 0V  
BLUE: Data -  
BLUE/WHITE: Data +

GREEN/WHITE: Data + (STAR)  
GREEN: Data - (STAR)  
BROWN: 0V  
BROWN/WHITE: +15V



### Technical Data

Dimensions	190x105x66mm
Input Supply	Powered from RAK-LINK via RJ11 connection or punchdown connection
Weight	280g
Housing	UL94-V0
Connections	Local side - RJ11 port, krone connector, concentric jack Remote side - RJ11 port, krone connector, concentric jack
Climate Range	Temperature +2C to +40C Humidity +5% to 95% non-condensing
Cable type	UTP CAT5e, CAT6, RJ11
Standards	RoHS UKCA, CE EN 60669-2-5:2016
Communication	CAN

### Installation and Setup

For information on installing and setting up the WANEX, see the [WANEX Manual](#).



Document Version 2.0.0

telephone +44 (0) 1634 226666 | [www.rakocontrols.com](http://www.rakocontrols.com)