



# Datasheet

## WK-CONNECT

In Ceiling Wired Connection Unit

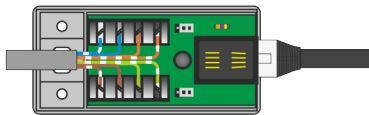
### What is the WK-CONNECT?

The WK-CONNECT is used to connect Wired accessories to the Rako Wired network via a punch-down and RJ11. It also provides termination jumpers, which must be set appropriately for the system to work correctly.

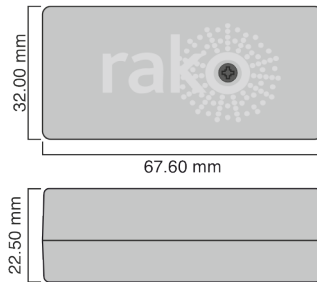
The WK-CONNECT is compatible with:

- WSR-DMX
- WSR-DLI
- WMR-DLI
- WK-HUB
- WLED150
- WLED75
- WLED30
- WK-PIR
- WRB-100

### Connections/Dimensions



ORANGE/WHITE: +15V  
ORANGE: 0V  
BLUE: Data -  
BLUE/WHITE: Data +  
GREEN/WHITE: Data + (STAR)  
GREEN: Data - (STAR)  
BROWN: 0V  
BROWN/WHITE: +15V



### Technical Data

Dimensions	67.6x32.0x22.5mm
Input Supply	12-18V DC supply from Rako CAT5 wired network
Weight	30g
Housing	UL94-V0
Fixing	3mm pozi pan head screw
Connections	8-way krone connector RJ11 port
Climate Range	Temperature +2C to +40C Humidity +5% to 95% non-condensing
Cable type	UTP CAT5e, CAT6, RJ11
Standards	RoHS UKCA, CE EN 60669-2-5:2016
Communication	CAN

### Installation and Setup

For information on installing and setting up the WK-CONNECT, see the [WK-CONNECT Manual](#).



Document Version 2.0.0

telephone +44 (0) 1634 226666 | [www.rakocontrols.com](http://www.rakocontrols.com)