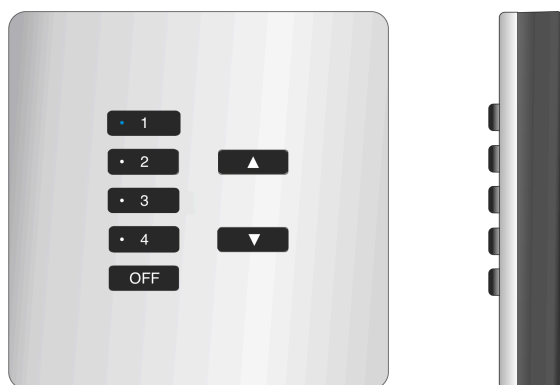




Instruction Manual

WCE-CLASSIC-SB

UK/EU Backbox Pattress



2025

Version 1.0.0



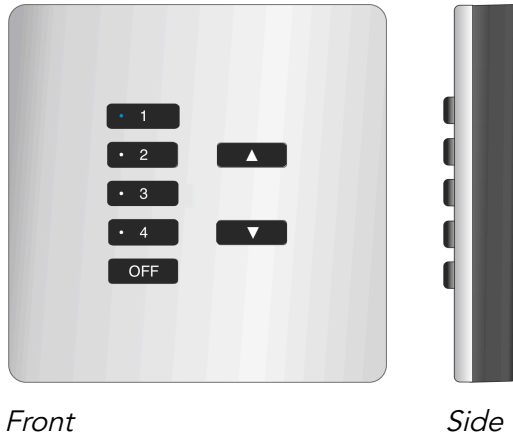
Contents

1.0 What is the WCE-CLASSIC-SB?.....	3
2.0 Installation Instructions.....	3

1.0 What is the WCE-CLASSIC-SB?

The WCE-CLASSIC-SB is a pattress designed to house the WCM keypad. The pattress can be mounted in either a UK or EU backbox.

1.1 Product Image



1.2 In The Box

- Internal pattress (Part B)
- Main pattress body (Part A)
- 4 x M3 x 5mm pan head cross screws
- 2 x countersunk M3.5 20mm screws
- WCE-070 plastic coverplate

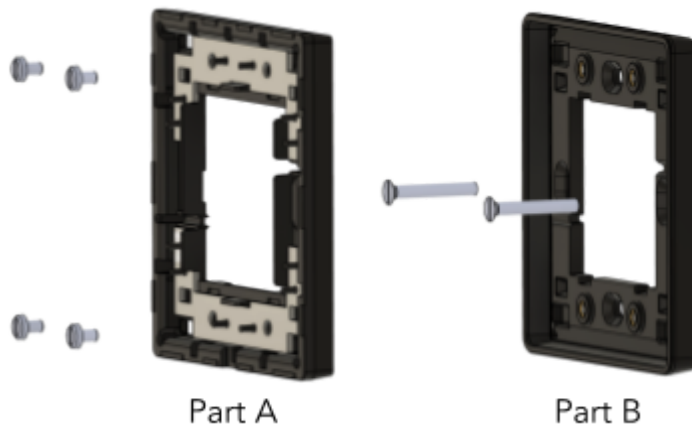
1.3 Product Requirements

- UK or EU Backbox with 36mm depth
- WCM Keypad
- WLH Coverplate

2.0 Installation Instructions

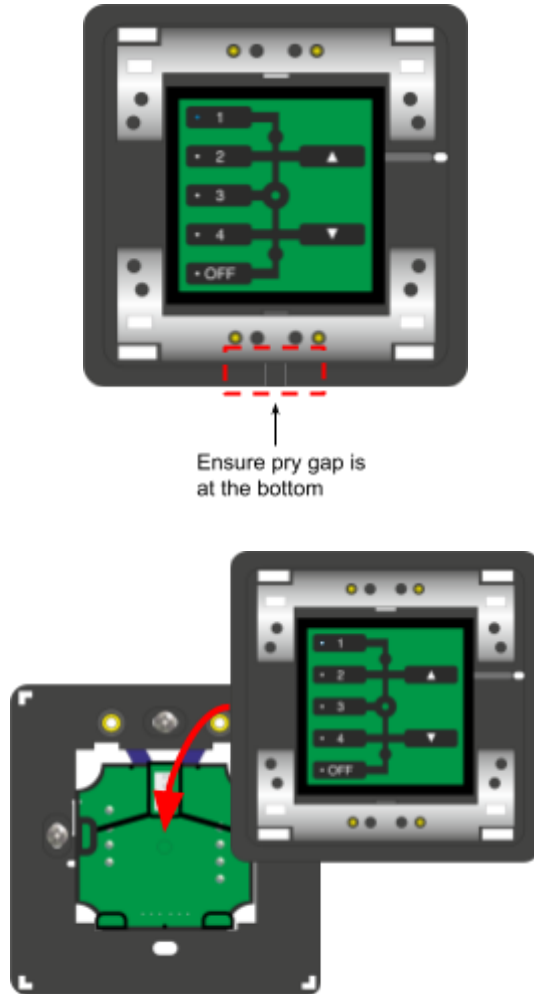
The WCE-CLASSIC-SB is compatible with a UK or EU backbox. The WCM keypad requires a minimum backbox size of 36mm.

The WCE-CLASSIC-SB is in two main parts, labelled below:



1	<p>UK BACKBOX</p> <p>EU BACKBOX</p>	<p>Mount Part B to either a UK or EU backbox using the vertical or horizontal fixings.</p> <p>NB The backbox must be at least 36mm deep.</p>
---	-------------------------------------	---

2



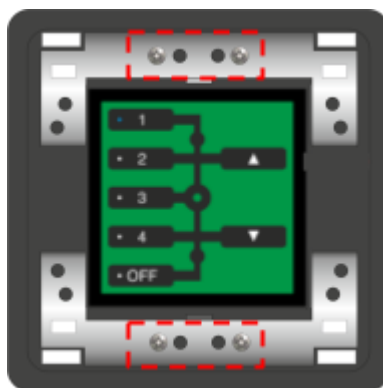
Ensure the WCM is aligned with the pry gap at the bottom of the WCE.

Push the front section of the WCM keypad into Part A.

Once fitted, connect the WCM front section in Part A to the punchdown section inside the backbox via the four-pin connector.

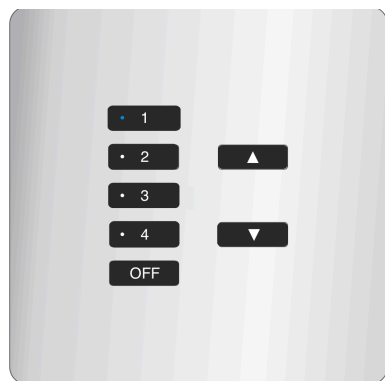
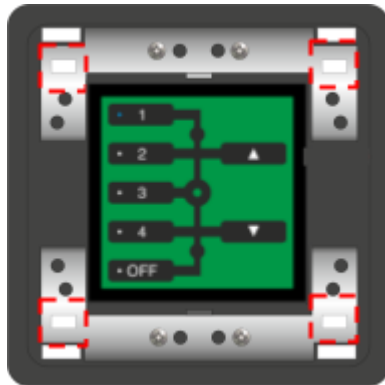
For further instructions on setting up the WCM, see the [WCM Instruction Manual](#).

3



Secure Part A to Part B using the four screws.

4



Line up the coverplate clips to the fixing points on Part B and push down firmly to secure the plate.

Thank you for choosing Rako Controls; we hope that you are pleased with your system. Should you require further assistance, please contact us via our website, www.rakocontrols.com call our customer support helpline on 01634 226666. The office address is Rako Controls Ltd, Knight Road Rochester, ME2 2AH.



Rako® and the Rako logo are registered trademarks of Rako Controls Ltd. Unauthorised use of these trademarks is prohibited.
All other product names, company names, and logos mentioned herein may be trademarks of their respective owners.